

## Barnstable County Single Family Historical Sales and New Listing Statistics, 2003 - Present

Year	New Listings (#)	Sales (#)	Avg. List Price (\$)	Avg. Sales Price (\$)	Sales Volume (\$)	Median List Price (\$)	Median Sales Price (\$)
2003	6486	4211	\$460,902	\$439,234	\$1,849,614,055	\$349,000	\$335,000
2004	7226	4415	\$532,015	\$506,184	\$2,234,802,980	\$389,900	\$377,500
2005	8369	3978	\$568,079	\$541,189	\$2,152,850,841	\$415,000	\$400,000
2006	8546	3143	\$590,437	\$555,602	\$1,746,258,341	\$555,602	\$395,000
2007	7530	3067	\$603,166	\$565,878	\$1,735,547,781	\$415,000	\$392,000
2008	6539	2953	\$528,979	\$491,323	\$1,450,877,218	\$365,000	\$345,000
2009	6252	2842	\$473,172	\$436,566	\$1,240,721,678	\$339,900	\$322,000
2010	6766	3141	\$501,745	\$466,681	\$1,465,844,455	\$350,000	\$335,000
2011	6266	3008	\$505,868	\$467,370	\$1,405,849,117	\$349,900	\$330,000
2012	6181	3804	\$527,833	\$488,595	\$1,858,615,847	\$356,250	\$337,500
2013	6467	3796	\$525,766	\$493,436	\$1,873,081,366	\$365,000	\$350,000
2014	6377	3658	\$556,981	\$522,334	\$1,910,699,524	\$375,000	\$358,000
2015	6538	3940	\$550,614	\$520,670	\$2,051,439,168	\$384,250	\$369,450
2016	6052	4410	\$557,820	\$527,821	\$2,327,691,401	\$389,900	\$375,000

The new listings calculation is the total number of new listings per month for a 12 month period equalling the year.

## Barnstable County Single Family Historical Sales and New Listing Statistics, 2003 - Present

Year	New Listings (#)	Sales (#)	Avg. Price (\$)	Sales Volume (\$)	Median Sales Price (\$)
2003	6486	4211	\$460,902	\$1,849,614,055	\$335,000
2004	7226	4415	\$532,015	\$2,234,802,980	\$377,500
2005	8369	3978	\$568,079	\$2,152,850,841	\$400,000
2006	8546	3143	\$590,437	\$1,746,258,341	\$395,000
2007	7530	3067	\$603,166	\$1,735,547,781	\$392,000
2008	6539	2953	\$528,979	\$1,450,877,218	\$345,000
2009	6252	2842	\$473,172	\$1,240,721,678	\$322,000
2010	6766	3141	\$501,745	\$1,465,844,455	\$335,000
2011	6266	3008	\$505,868	\$1,405,849,117	\$330,000
2012	6181	3804	\$527,833	\$1,858,615,847	\$337,500
2013	6467	3796	\$525,766	\$1,873,081,366	\$350,000
2014	6377	3658	\$556,981	\$1,910,699,524	\$358,000
2015	6538	3940	\$550,614	\$2,051,439,168	\$369,450
2016	6052	4410	\$527,821	\$2,327,691,401	\$375,000

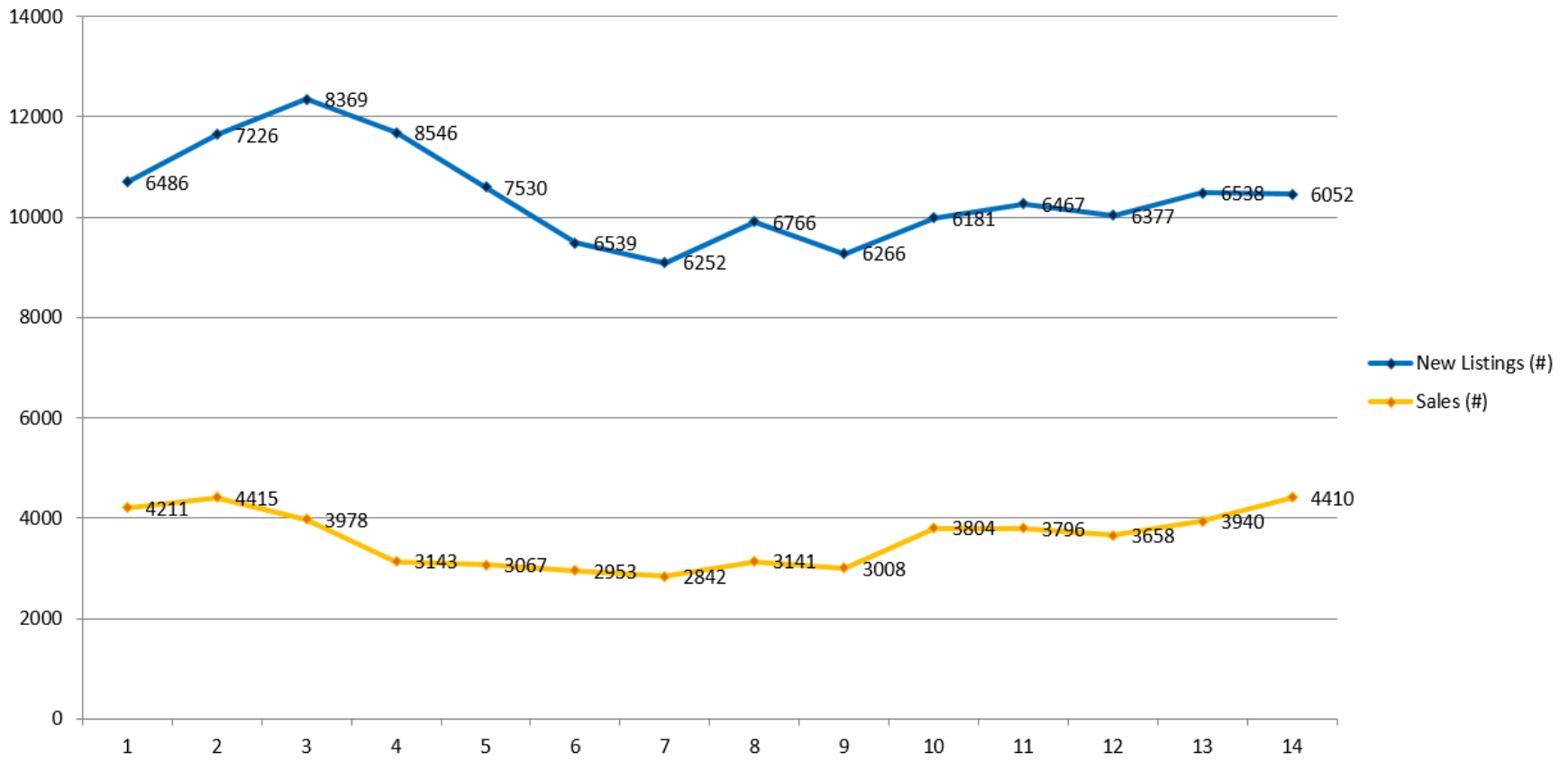
The new listings calculation is the total number of new listings per month for a 12 month period equalling the year.

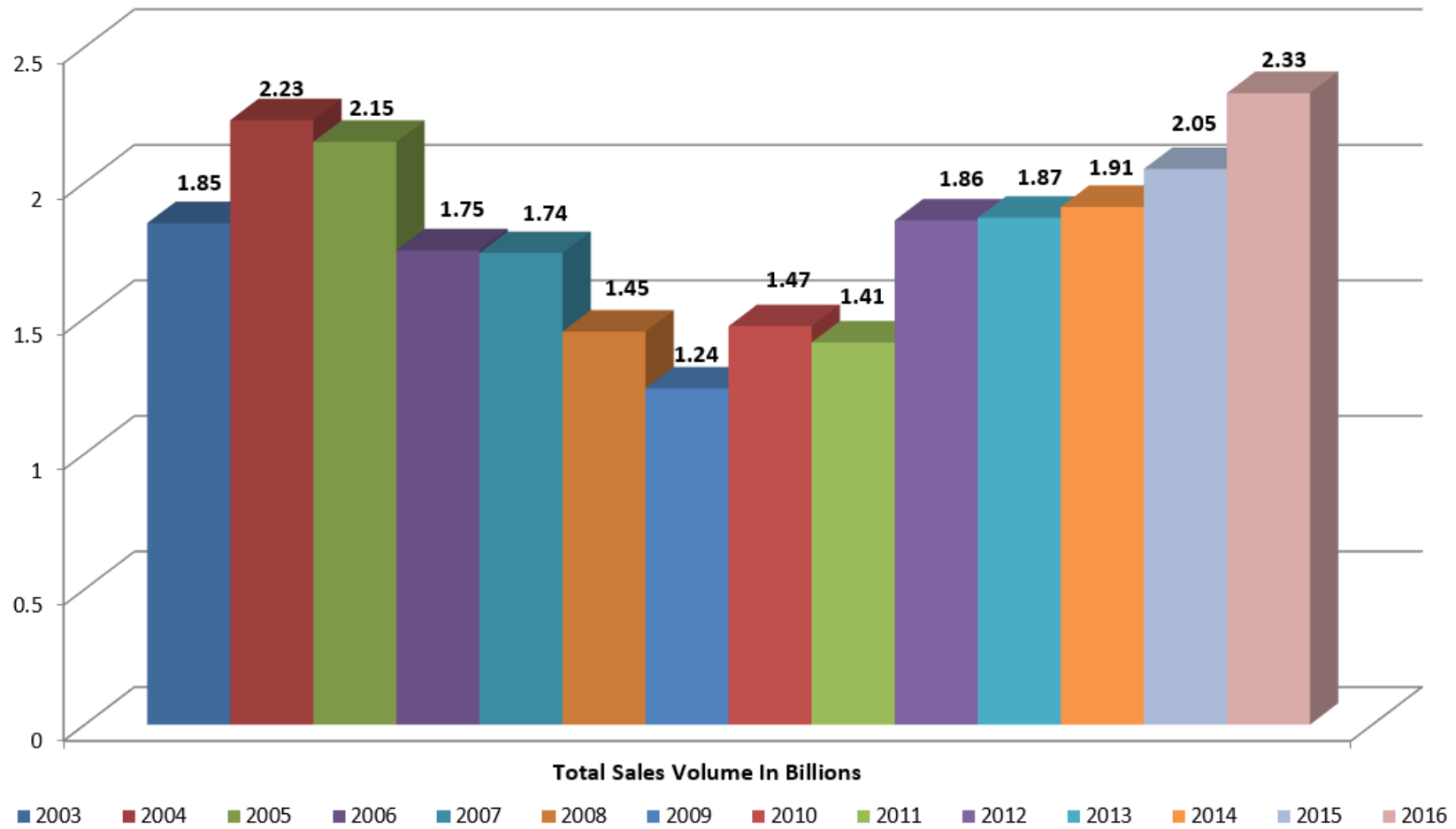
### History of Listings/Sales Activity in Barnstable County for Single Family Homes, 2003 - Present

Year	# Listings		# Sales %			Total % \$	Average Sold		Median Sold		Coop Sales	%Coop Sales
	New Listings (#)	% Change	Sales (#)	Change	Sales Volume (\$)	Volume Change	Avg. Sales Price (\$)	Price % Change	Median Sales Price (\$)	Price % Change		
2003	6486		4211		\$1,849,614,055		\$439,234		\$335,000		2,789	
2004	7226	11.41%	4415	4.84%	\$2,234,802,980	20.83%	\$506,184	15.24%	\$377,500	12.69%	3,001	7.60%
2005	8369	15.82%	3978	-9.90%	\$2,152,850,841	-3.67%	\$541,189	6.92%	\$400,000	5.96%	2,797	-6.80%
2006	8546	2.11%	3143	-20.99%	\$1,746,258,341	-18.89%	\$555,602	2.66%	\$395,000	-1.25%	2,243	-19.81%
2007	7530	-11.89%	3067	-2.42%	\$1,735,547,781	-0.61%	\$565,878	1.85%	\$392,000	-0.76%	2,237	-0.27%
2008	6539	-13.16%	2953	-3.72%	\$1,450,877,218	-16.40%	\$491,323	-13.18%	\$345,000	-11.99%	2,234	-0.13%
2009	6252	-4.39%	2842	-3.76%	\$1,240,721,678	-14.48%	\$436,566	-11.14%	\$322,000	-6.67%	2,190	-1.97%
2010	6766	8.22%	3141	10.52%	\$1,465,844,455	18.14%	\$466,681	6.90%	\$335,000	4.04%	2,385	8.90%
2011	6266	-7.39%	3008	-4.23%	\$1,405,849,117	-4.09%	\$467,370	0.15%	\$330,000	-1.49%	2,302	-3.48%
2012	6181	-1.36%	3804	26.46%	\$1,858,615,847	32.21%	\$488,595	4.54%	\$337,500	2.27%	2,887	25.41%
2013	6467	4.63%	3796	-0.21%	\$1,873,081,366	0.78%	\$493,436	0.99%	\$350,000	3.70%	2,946	2.04%
2014	6377	-1.39%	3658	-3.64%	\$1,910,699,524	2.01%	\$522,334	5.86%	\$358,000	2.29%	2,786	-5.43%
2015	6538	2.52%	3940	7.71%	\$2,051,439,168	7.37%	\$520,670	-0.32%	\$369,450	3.20%	2,988	7.25%
2016	6052	-7.43%	4410	11.93%	\$2,327,691,401	13.47%	\$527,821	1.37%	\$375,000	1.50%	3,450	15.46%

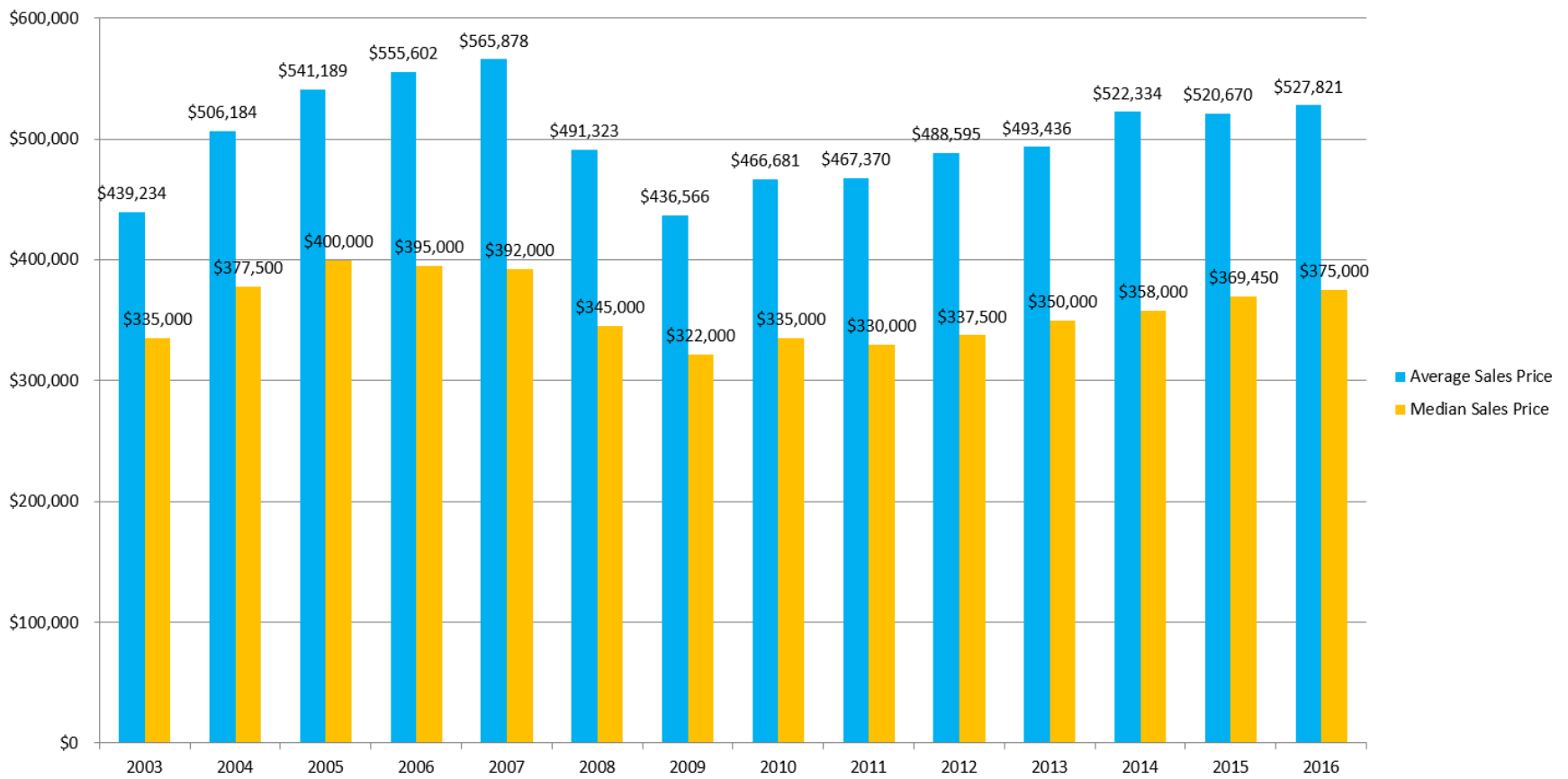
The new listings calculation is the total number of new listings per month for a 12 month period equalling the year.

New Listings and Sales 2003 - Present





*Information based on Single Family homes in Barnstable County*



Information based on Single Family homes in Barnstable County